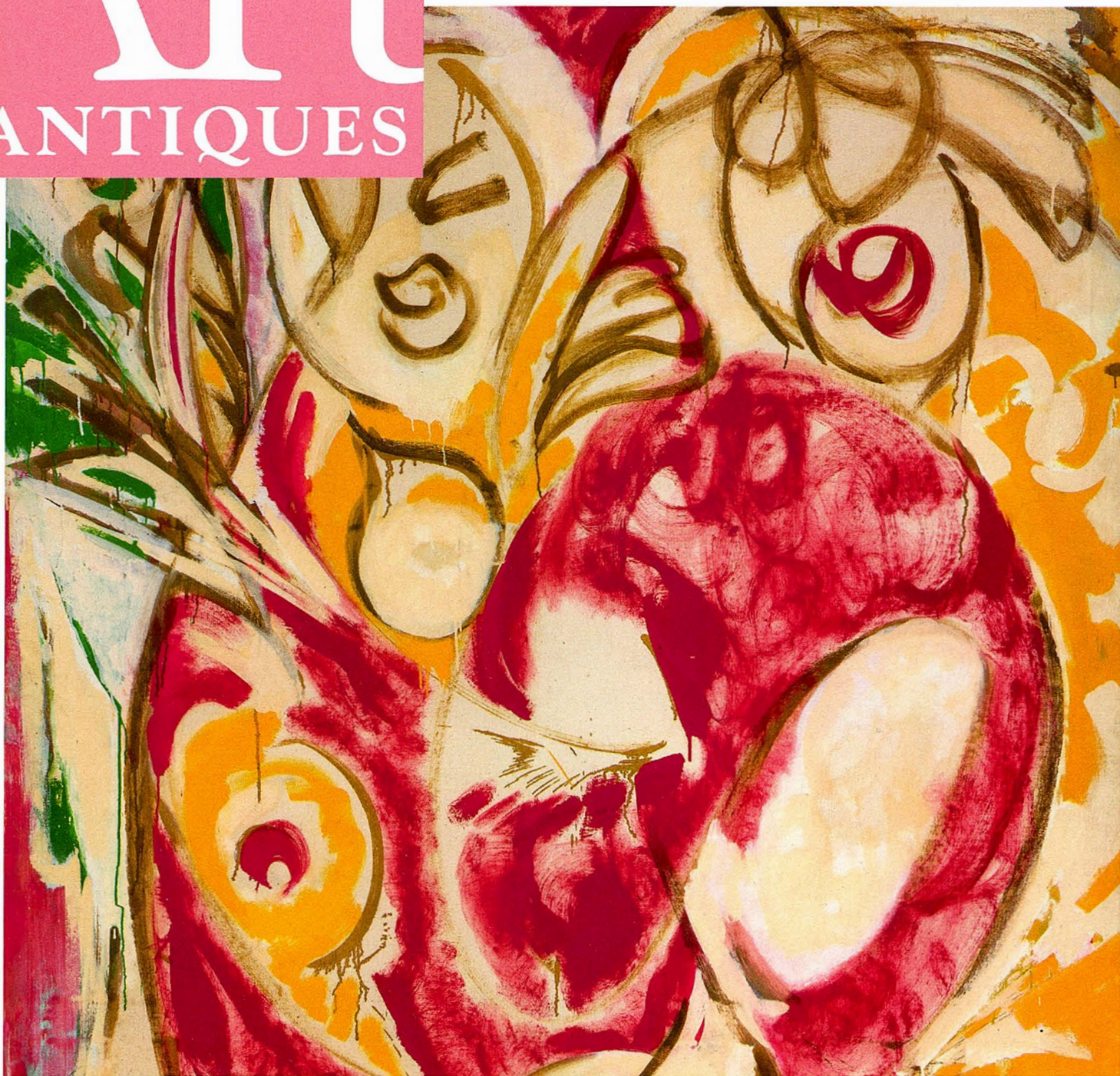


FEBRUARY 2011

# Art & ANTIQUES

FOR COLLECTORS OF THE FINE AND DECORATIVE ARTS



PRE-RAPHAELITES | FRANCIS BACON | EMILY MASON | JORIS LAARMAN

\$7.50US/CAN

02>



LEE KRASNER





*The Enlargment*, 2017, acrylic on carved wood, 31 1/2 x 19 3/8 x 7 1/4 inches

# HOLLY LANE INDWELLING NATURE

Exhibition: January 27 – June 10, 2018

Fresno Art Museum  
In cooperation with Winfield Gallery

**FAM** FRESNO  
ART MUSEUM

559.441.4221 | [www.fresnoartmuseum.org](http://www.fresnoartmuseum.org)

Works available through Winfield Gallery

Dolores between Ocean & 7th  
PO Box 7393 Carmel, CA 93921  
800.289.1950 | 831.624.3369

[www.winfieldgallery.com](http://www.winfieldgallery.com)

WINFIELD  
GALLERY



# Frame Stories

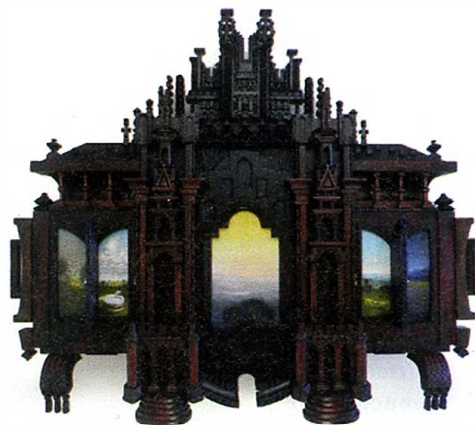
WORKS BY Bay Area painter Holly Lane take center stage at the Fresno Art Museum's current exhibition "Holly Lane: Indwelling Nature." The show runs through June 10 and features both the artist's paintings, which are surrounded by hand-carved frames, and purely sculptural work.

The intricate frames of Lane's dreamy paintings look at first glance like miniaturized Gothic cathedrals or the elaborate built-ins in a robber baron's turn of the century mansion. Inspired in part by the richly detailed borders and frames in illuminated manuscripts, the frames are like theaters or highly detailed cabinets that present and



reveal the paintings. Lane's paintings, which often depict horizons or intimate views of animals, seem secret and precious, like a hidden truth.

In *After the Storm*, a 2015 work in the show (acrylic and carved wood), a central panel, which is hugged by Gothic tower-like columns, pictures the top of a tree and the yellow light of the sun over rolling hills. There are two panels on each side, which have hinged shutters. On one side, a flock of birds crowds a landscape and a goose sits on a short stack of books in an expanse of country. On the other, two dogs play tug of war, and lights and stars glow over the water at night.



*Forest Lustration by the River Lethe*, a 2011 gilded carved wood sculpture, recalls the opulent accoutrements of the altar of a Catholic church. In Greek mythology, the River Lethe was one of the five rivers in the underworld of Hades. Flowing around the cave of Hypnos, the water caused complete forgetfulness to anyone who drank from it.

catalogue online:  
[www.musikinstrumente-auktion.de](http://www.musikinstrumente-auktion.de)

August Grenser  
flute with four  
interchangeable pieces

## Special-Auction 1000 Music-Instruments February 24<sup>th</sup>, 2018

Two historical and unusual collections by enthusiastic collectors will be auctioned. It includes significant wind instruments, percussion instruments, plucked instruments and strings from all over the world. The special focus was put on wind instruments. It shows the development over three centuries of the shawm, oboe, flute, clarinet, bassoon, and horn. Many more recent, good playable instruments up to a spinet and an autopian.

Wenzel Josef Schunda  
Tarogato

Gebrüder Mönning  
plexiglas-oboe / metal-oboe

Bainbridge  
dual-flageolet

information and catalogue order (€ 40,-)  
Ladenburg Spielzeugauktion GmbH  
Götz C. Seidel – auctioneer (publicly appointed and sworn)  
Pia Fast-Seidel – auctioneer  
Lustgartenstr. 6 – D-68526 Ladenburg  
phone: 0049(0)6203-13014 – fax: 0049(0)6203-17193  
mail@musikinstrumente-auktion.de – [www.musikinstrumente-auktion.de](http://www.musikinstrumente-auktion.de)  
background image: © manjikk / fotolia.com / front image: © Ladenburger Spielzeugauktion GmbH