


IPA





"My intent is to transcend both my subject and the paint itself to discover something that resonates deeply as my, often vulnerable, inner experience. Transferring that expression of this human experience to someone who will really open to it and relate to it, creating human connection, is my goal. I urge people to see the work in person, if possible, or investigate the close up details on my website to see the surface. Paintings are objects you need to be in the same room with to feel their intimacy. I like mine to be as intimate as possible, using the painted surface like a fossil recording every gesture and decision."

Melancholy
2014
oil on panel
10 x 10

ALYSSA MONKS



Alyssa Monks

What prompted this new direction?

Losing my mother has changed my life very deeply. My thoughts, my beliefs, my attention and my priorities have all been rearranged and reorganized and thus, my painting. I paint differently - more mindfully, more attentively, more adventurously and curiously I think. I want to make it count. Caring for my mother during her illness and passing and being so close to my family during this time was a beautiful, awful experience in which there was only one answer to coping with the pain of being there - and that was just to be present, let go, give and receive the kind attention as much as possible and try not to struggle or control it. There were such moments of love and peace I felt and witnessed that have forever changed me. In my work I want to realize these moments and share them if I can.

How long have you been working on these new pieces?

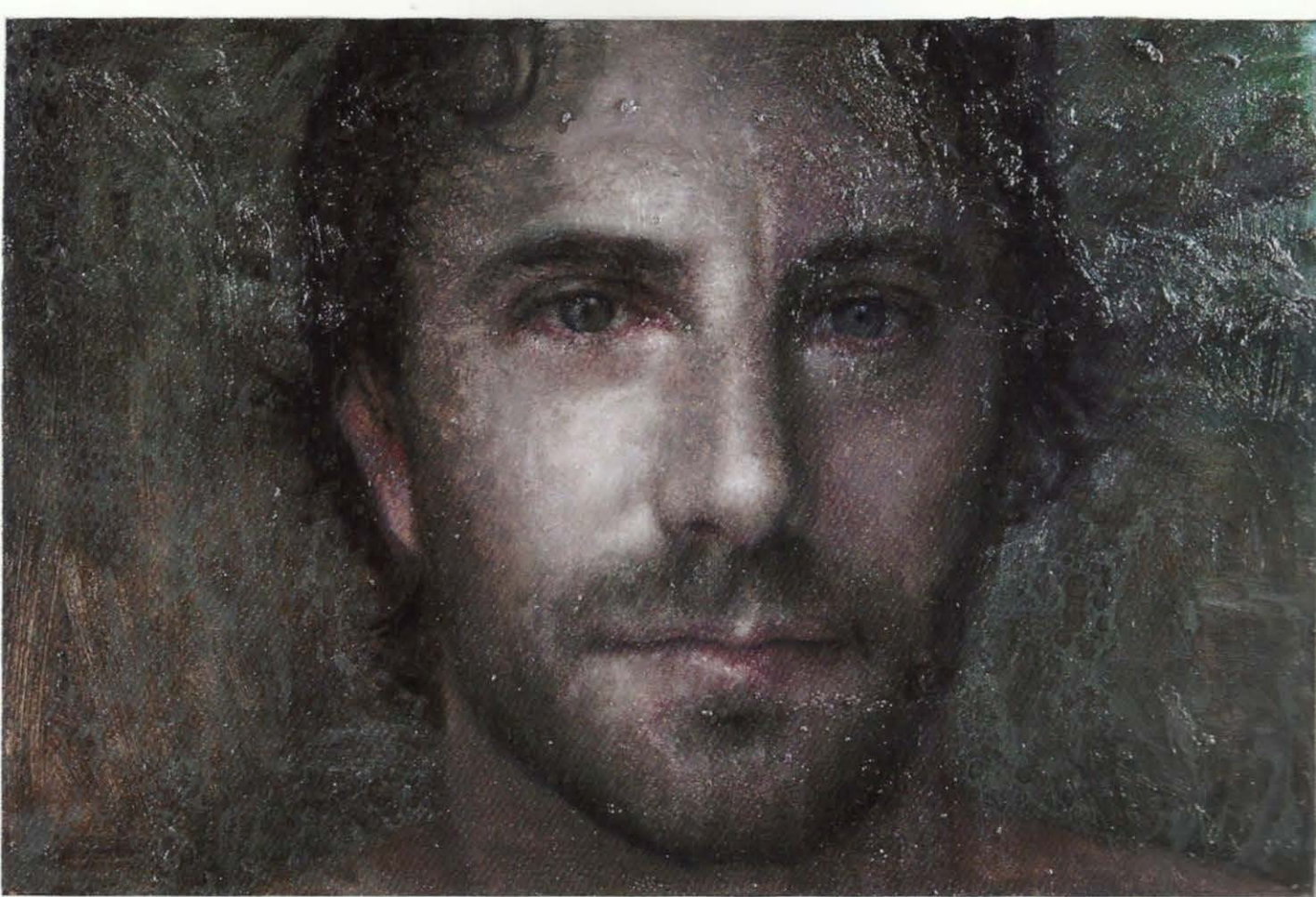
The new series has been incubating in me for 3 years now, with many false starts and failed experiments. The new work I'll be exhibiting began about a year ago.

Where are you headed next?

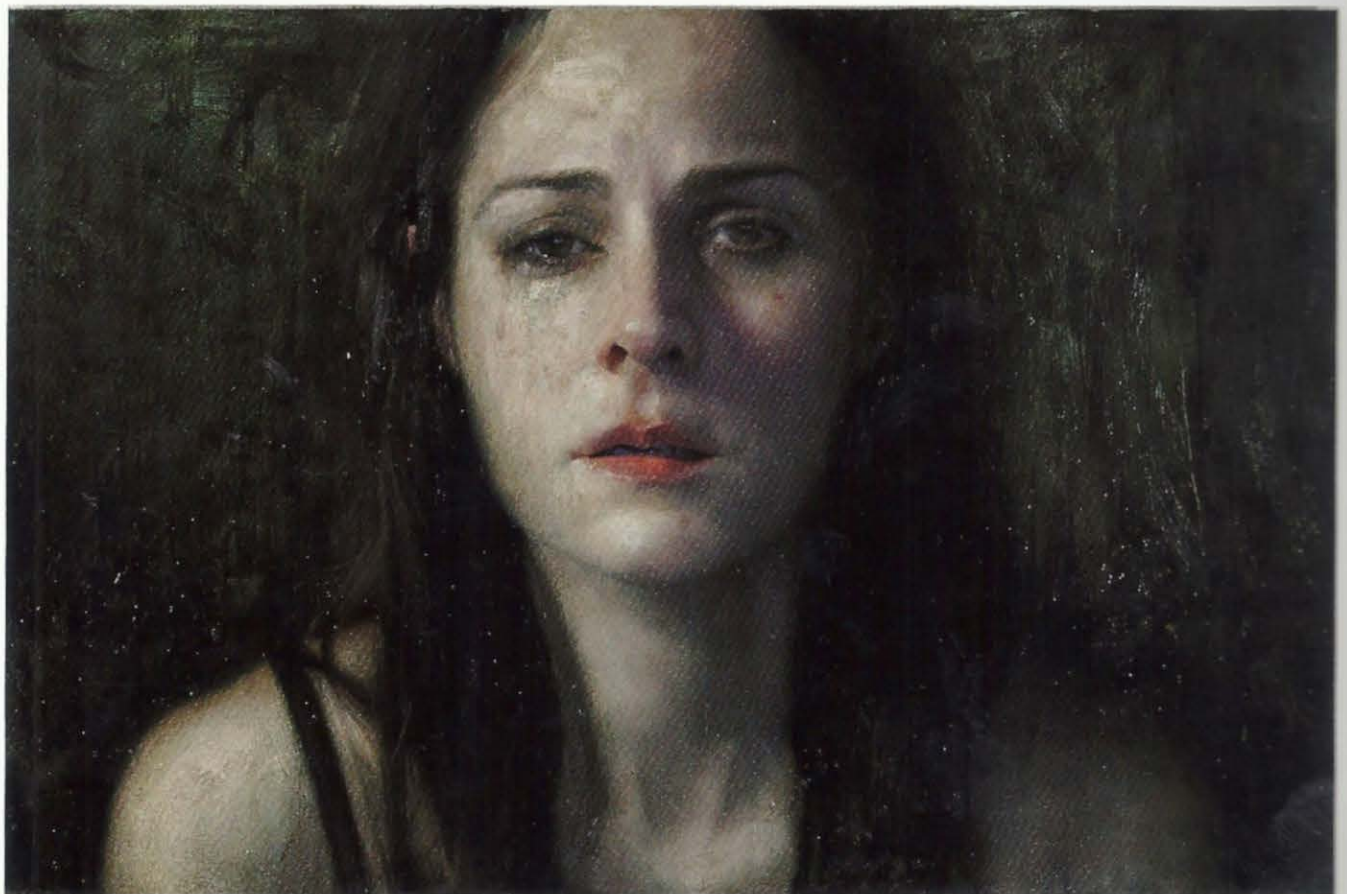
I plan on just exploring intimacy and real human connection and belonging more and more. Not in a literal way, but in the way I paint and the connections I feel with my subjects and bring to the painting process. I've always worked in a very organic way, somewhat stream of consciousness without controlling or contriving too much. So I will continue to do so, in this new space of the growing awareness of such deep loss and love.

Q&A



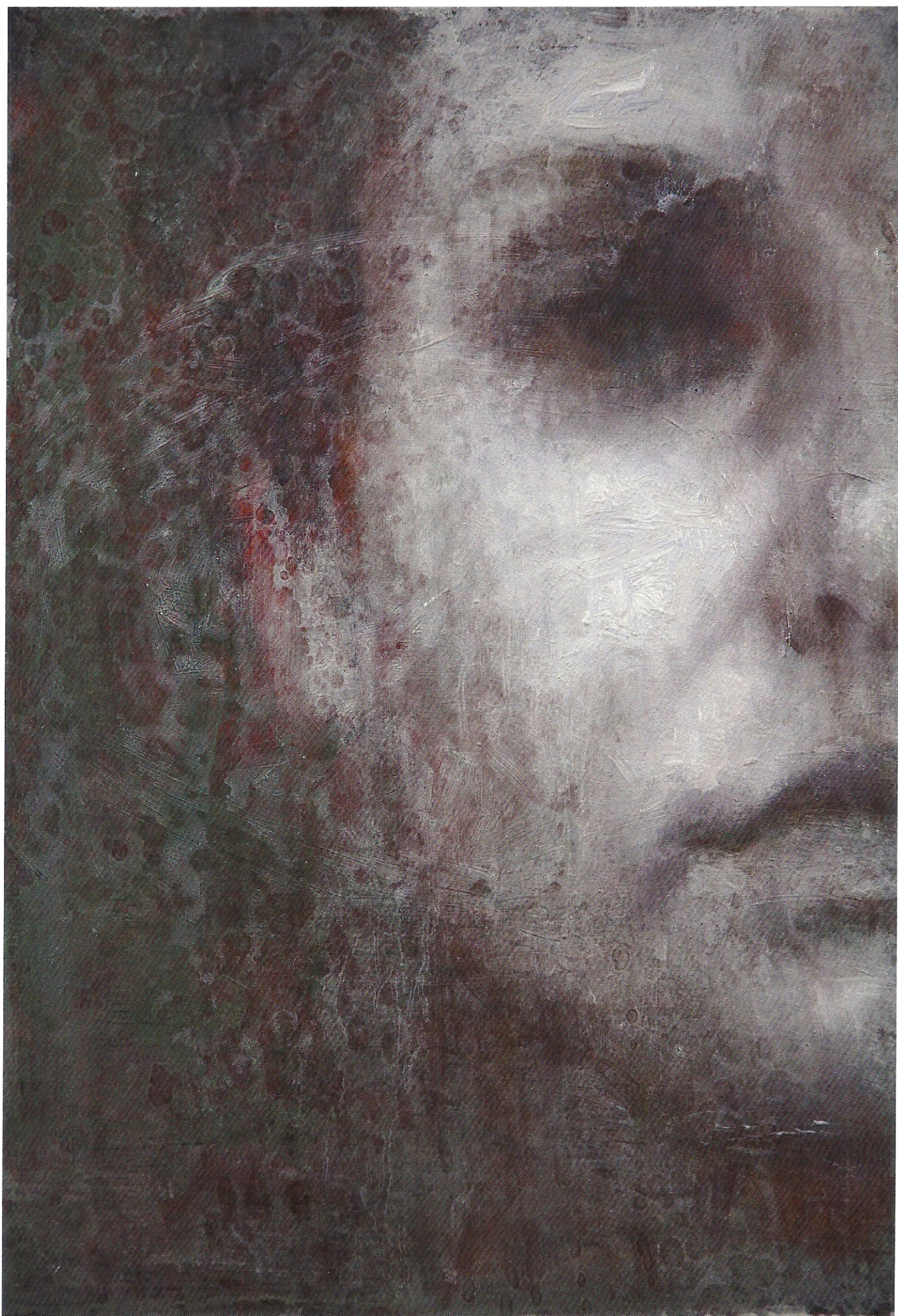


Alyssa Monks *Unison* 2014 oil on linen 32 x 48



Alyssa Monks *Loss* 2014 oil on linen 48 x 72

Alyssa Monks
Mirage
2014
oil on panel
16 x 11

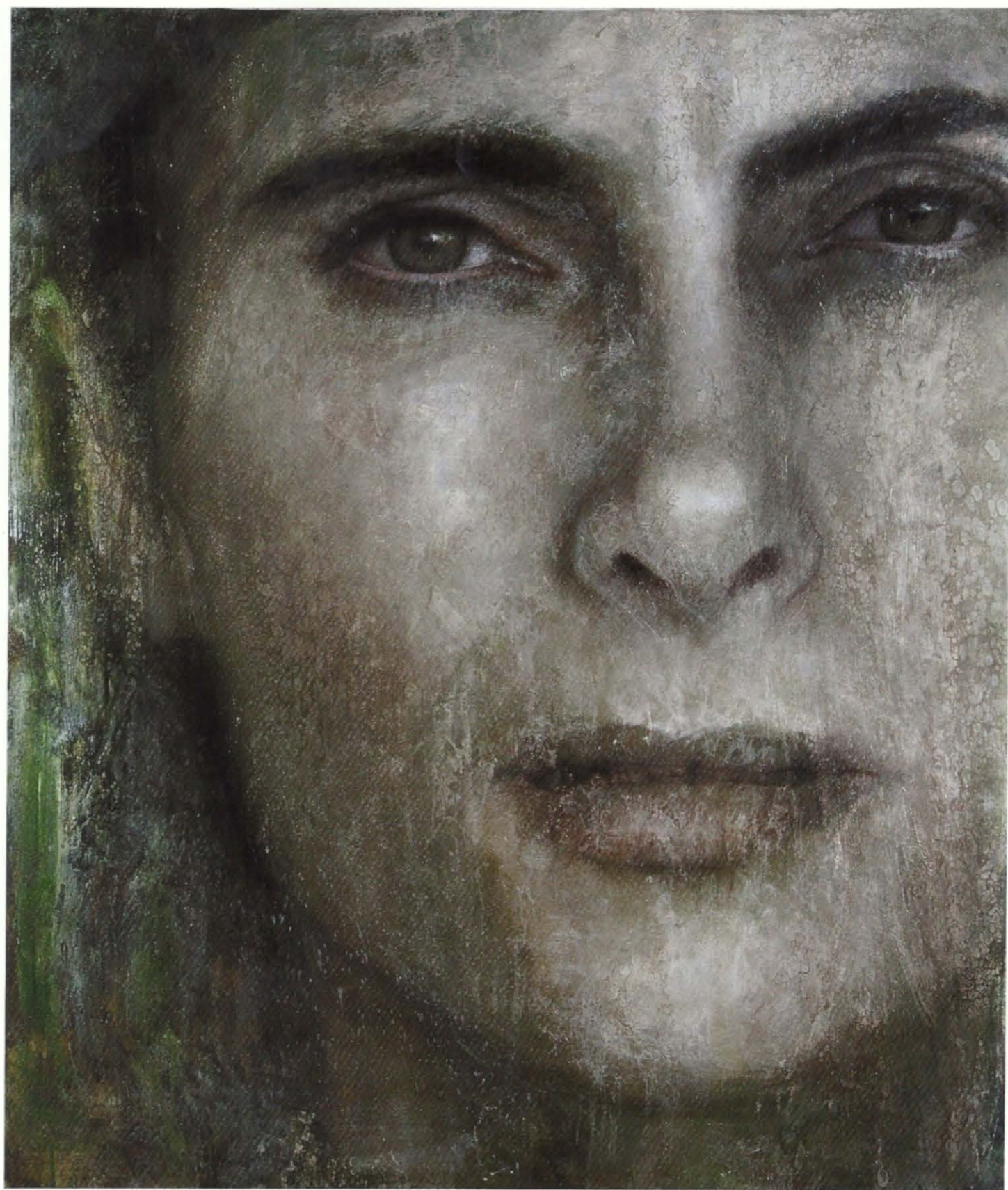




Alyssa Monks
Hope Rosalyce
2014
oil on linen
48 x 72

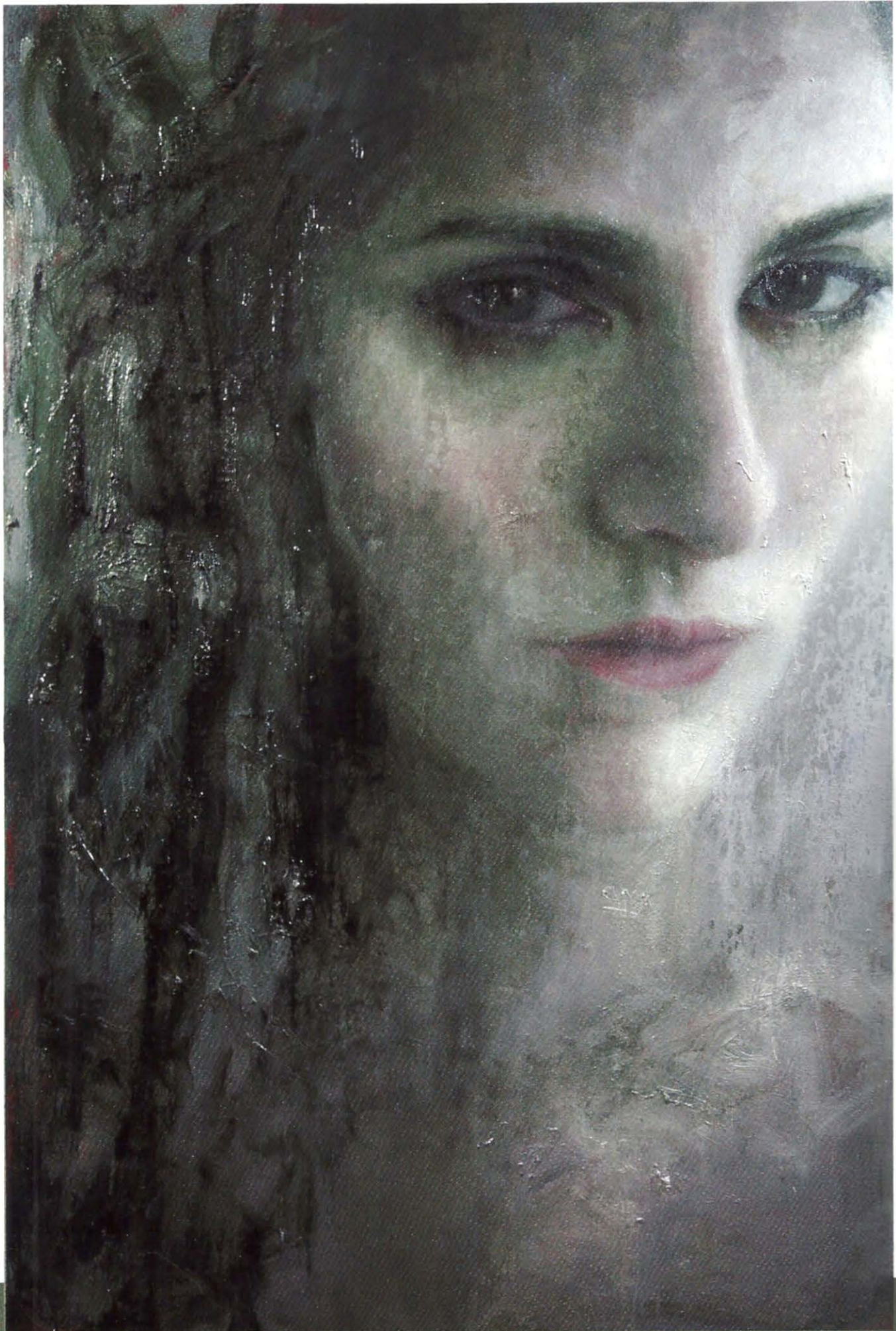


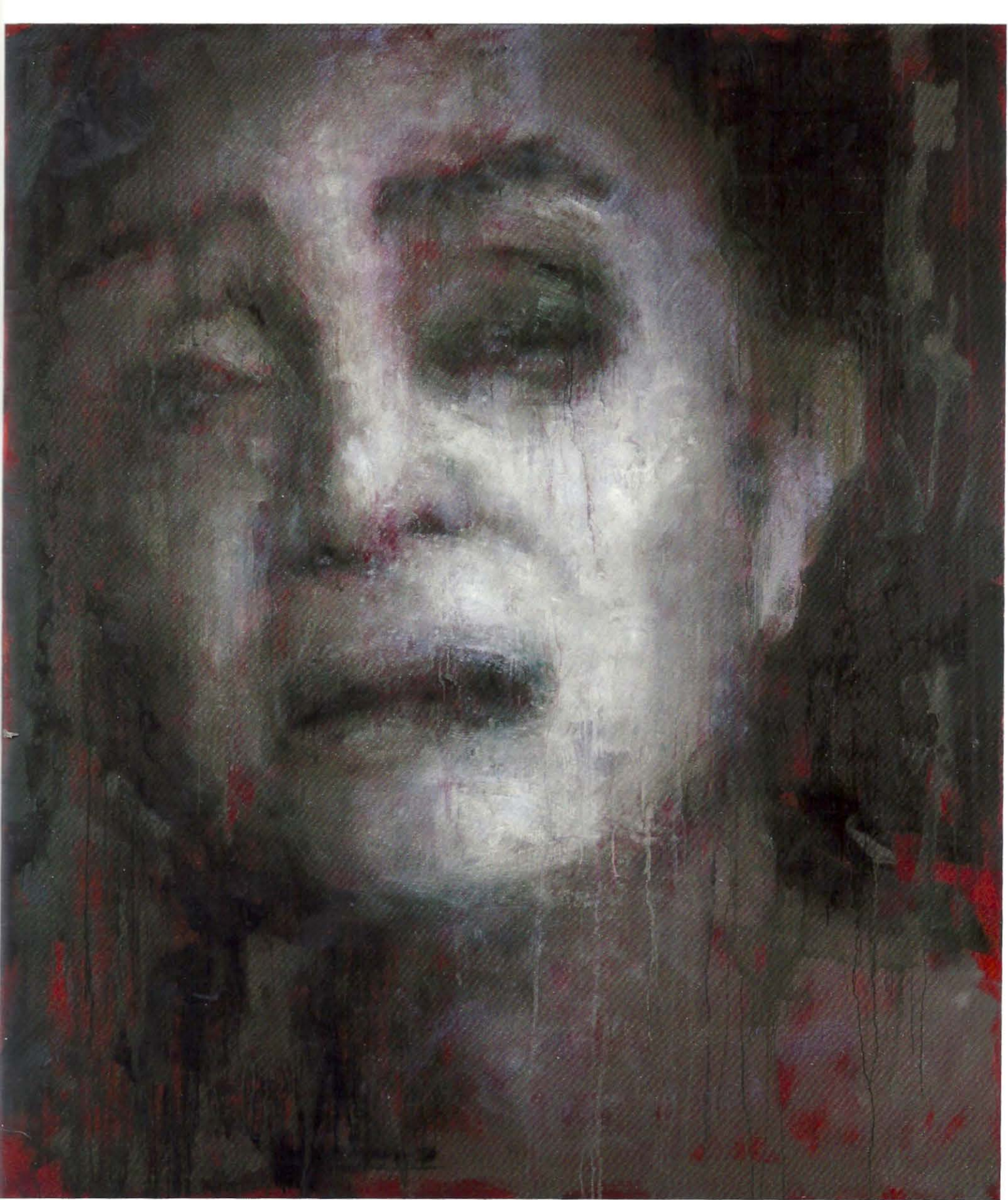
Alyssa Monks
Grow
2014
oil on panel
10 x 10



Alyssa Monks
Search
2014
oil on linen
66 x56

Alyssa Monks
Remain
2014
oil on linen
72 x 46





Alyssa Monks
Mortality
2014
oil on linen
66 x 56



Alyssa Monks' Studio





Front & Back Cover by
Alyssa Monks